

OrbFit

ECONOMICAL, COMPACT AND FUNCTIONAL.

IDEAL FOR THOSE SEEKING COST SAVINGS AND FUNCTIONALITY, OFFERING GOOD LIGHTING PERFORMANCE AT A LOW COST.

FEATURES



100 W

02 Modules of 24 leds

14.630 Effective lumens.

QUALITY

Ensures a lifespan of up to 102,000 hours

05-year warranty

DEDICATED LENSES, LIGHT EMISSION WITHOUT WASTE

Additional and individual photometric system per LED, ensuring the right luminance in the right place

BEST COST-BENEFIT

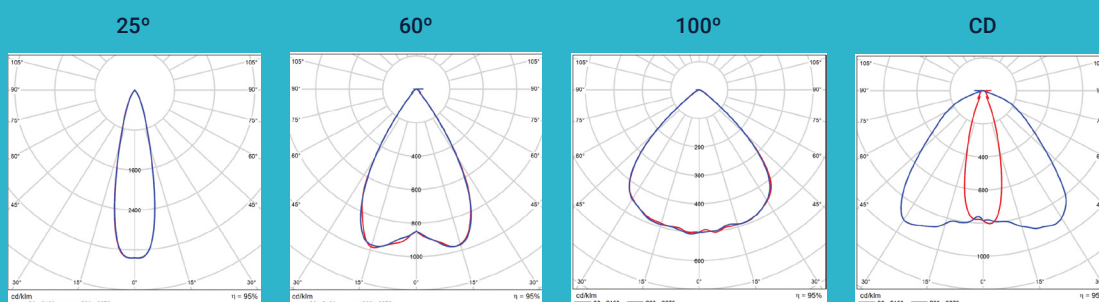
AALOK quality with the best market cost

POWER: 100 W

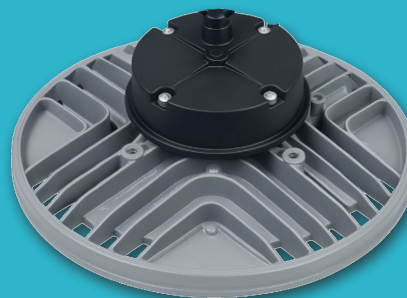
SEGMENTS

Automotive sector, logistics condominiums, textile industry, shopping centers, parking lots, gyms, automotive sector, among others.

PHOTOMETRY



TECHNICAL SPECIFICATIONS



100 W
02 Modules of 24 leds
14.630 Effective lumens.

Module Type	12 LEDs	24 LEDs
Total Luminous Flux (lm)	15.650	19.141
Effective Luminous Flux (lm)	14.868	18.184
Luminous Efficiency (lm/W)	133	151
Model / Power	100 W	
Effective Power	110 W	
Number of Modules	2	
LED Type	5050	
Color Temperature (K)	5000K	
CRI	>70	
Average Weight (Kg)	2.100 kg	
Beam Angles	25° / 60° / 90° / CD	
Dimensions	285 x 195	

Electrical Characteristics

Harmonic Distortion	≤15% / 230 Vac	≤10% / 230 Vac
Operating Voltage	100 - 240 Vac	220 - 240 Vac
Harmonic Frequency	50 to 60 Hz	
PF (Power Factor)	≥0.95 / 230Vac	
Operating Temperature	-20 a + 80° C	
Electrical Class	Class 2	

Quality

Lifespan	102,000 hours of continuous use
Warranty	5 anos
Protection Rating	IP66
Impact Protection	IK08
Body	Injected Aluminum

Certifications

Driver	ENEC, CE, CB, RCM, SAA, CCC
LED	IESNA LM-80
Company	ISO9001

Notice: Product information and specifications may be changed without prior notice, in accordance with technical improvements and updates.