

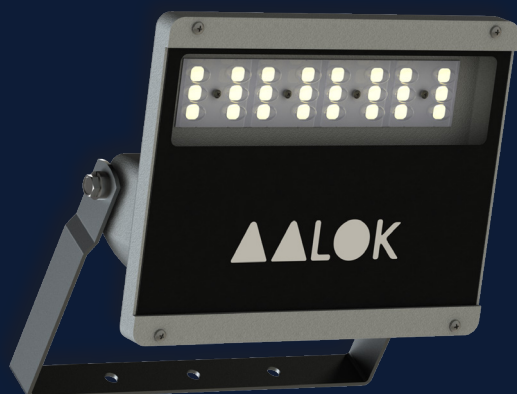
MDK Off Grid (12V e 24V)

FOR ATYPICAL SITUATIONS

DESIGNED FOR REMOTE AREAS, CAMPSITES, TEMPORARY CONSTRUCTIONS, AND SITUATIONS WHERE THERE IS NO ACCESS TO THE ELECTRICAL GRID.



FEATURES



100 W

01 Modules with 24 leds

11.250 Effective lumens

QUALITY

Ensures a lifespan of up to 102,000 hours
5-year warranty.

DEDICATED LENSES, LIGHT EMISSION WITHOUT WASTE

Additional and individual photometric system for each LED, ensuring the right luminance in the right place.

UNIQUE STRUCTURE DESIGN

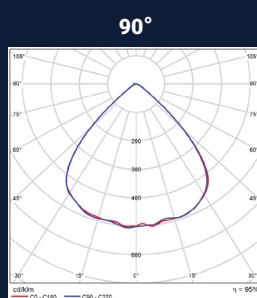
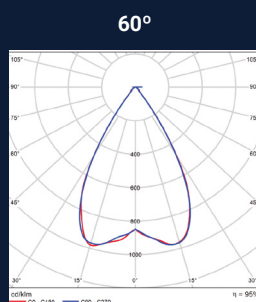
Higher thermal dissipation efficiency.

POWER RATINGS: 100 W e 150 W

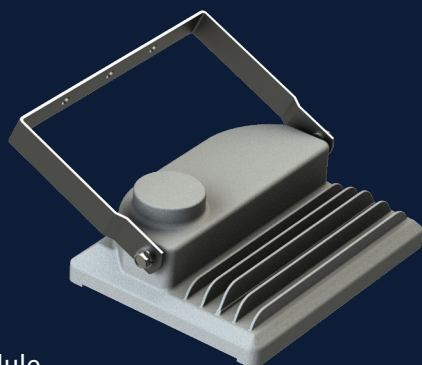
SEGMENTS

Construction, agribusiness, emergency infrastructure, mining, campsites, telecommunications, facility security, among other sectors that require battery-powered lighting.

PHOTOMETRY



TECHNICAL SPECIFICATIONS



100 W
01 Module
11.250 Effective lumens



150 W
02 Modules
17.855 Effective lumens

Model / Power	100 W	150 W
Effective Power	101 W	145 W
Number of Modules	1	2
LEDs per Module	24 Leds	24 Leds
Total Luminous Flux (lm)	13.629	21.627
Effective Luminous Flux (lm)	11.250	17.855
Luminous Efficiency (lm/W)	116	123
LED Type	5050	
Color Temperature (K)	5000K	
CRI	>70	
Average Weight (Kg)	2,2 kg	
Beam Angles	60° / 90°	
Dimensions	270 x 215 x 85 mm	

Electrical Characteristics

Operating Temperature	-20 to 80°C	
Supply Voltage	12 to 36 Vdc	
Supply Current	2.7 to 8.5 A	4.2 to 13 A
Power Source Frequency	Direct Current	Direct Current
Nominal Power	100 W	150 W
Effective Power	101 W	145 W
Surge Protection	I=10A Uc = 275VAC-350VDC In = 5kA @8/20µs Imax = 10kA @8/20µs	

Quality

Lifetime	102,000 hours of continuous operation
Warranty	5 years
Ingress Protection Rating	IP66
Housing	Die-cast aluminum

Certifications

Driver	ENEC, CE, CB, RCM, SAA, CCC
LED	IESNA LM-80
Company	ISO9001

Notice: Product information and specifications are subject to change without prior notice, due to technical improvements and updates.

Version: 08/2025



RUA OLAVO MACHADO 120
CINCO - CONTAGEM / MG - BRASIL

WWW.AALOK.COM.BR
CONTATO@AALOK.COM.BR
 TEL: (31) 3390-2301

[/AALOK.ECONOMIA](https://www.instagram.com/AALOK.ECONOMIA)
[/COMPANY/AALOK](https://www.linkedin.com/company/AALOK)