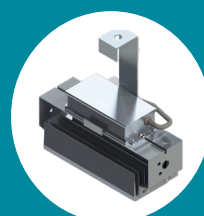


# Fit Standard

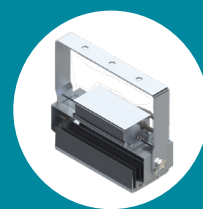
## POWERFUL, EFFICIENT, AND VERSATILE

DESIGNED FOR LARGE LOGISTICS CENTERS, INDUSTRIAL WAREHOUSES, AND HIGH BAY FACILITIES, AS WELL AS OUTDOOR AREAS AND ENVIRONMENTS THAT REQUIRE HIGH-INTENSITY LIGHTING.

## APPLICATIONS

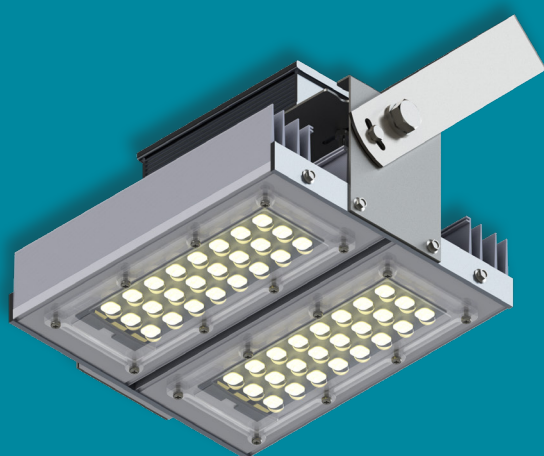


Hook



Handle

## FEATURES



**100 W**

02 Modules with 24 leds

18.184 Effective lumens

## QUALITY

Ensures a lifespan of up to 102,000 hours

5-year warranty.

**DEDICATED LENSES, LIGHT EMISSION WITHOUT WASTE**

Additional and individual photometric system for each LED, ensuring the right luminance in the right place.

**BEST COST-BENEFIT**

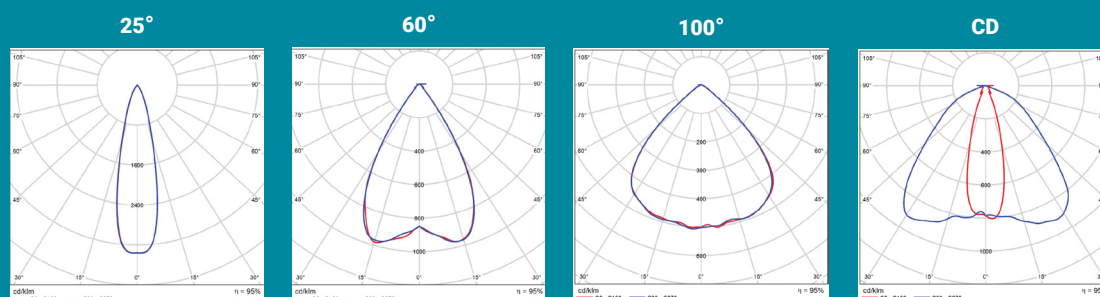
AALOK quality with the best market value.

**POWER OPTIONS: 50 W, 100 W, 150 W, 200 W**

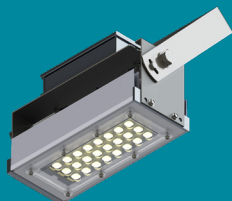
## SEGMENTS

Gyms and sports courts, dealerships, logistics condominiums, textile industry, pulp and paper, automotive sector, manufacturing industry, among others.

## PHOTOMETRY



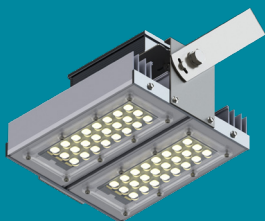
## TECHNICAL SPECIFICATIONS



**50 W**

01 Module

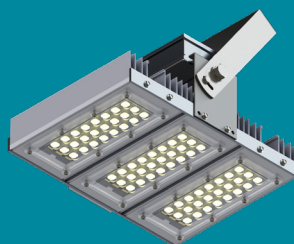
9.092 Effective lumens



**100 W**

02 Modules

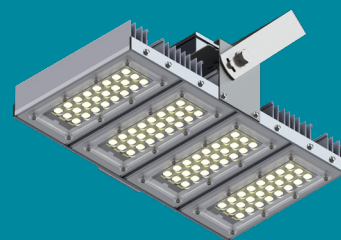
18.184 Effective lumens



**150 W**

03 Modules

27.276 Effective lumens



**200 W**

04 Modules

36.368 Effective lumens

Model / Power	50 W	100 W	150 W	200 W
Effective Power	60 W	120 W	178 W	235 W
Total Luminous Flux (lm)	9.570	19.141	28.712	38.282
Effective Luminous Flux (lm)	9.092	18.184	27.276	36.368
Luminous Efficiency (lm/W)	151	151	153	155
Number of Modules	1	2	3	4
LEDs per Module	24			
Dimensions (mm)	90 x 240 x 119	180 x 240 x 119	270 x 240 x 119	360 x 240 x 119
Color Temperature (K)	5000			
CRI	>70			
Average Weight (Kg)	1,7 to 4,8			
Beam Angles	25° / 60° / 90° / CD			

### Electrical Characteristics

Harmonic Frequency	50 to 60 Hz		
Harmonic Distortion	≤15% / 230 Vac	≤10% / 230 Vac	
Operating Voltage	220 - 240 Vac	100 - 240 Vac	
Power Factor (PF)	≥0.95 / 230Vac		
Operating Temperature	-20 to + 80° C		

### Quality

Lifespan	102.000 hours of continuous use
Warranty	5 years
Protection Rating	IP54 (optional IP67)
Housing	Aluminum
Fasteners	Stainless Steel
Printed Circuit Board	Metal Core

### Certifications:

Driver	ENEC, CE, CB, RCM, SAA, CCC
LED	IESNA LM-80
Company	ISO9001

Notice: Product information and specifications are subject to change without prior notice due to technical improvements and updates.