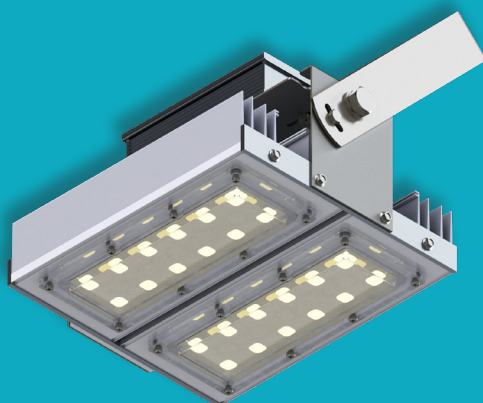


Fit Lite

SIMPLE, LIGHTWEIGHT, AND EFFICIENT

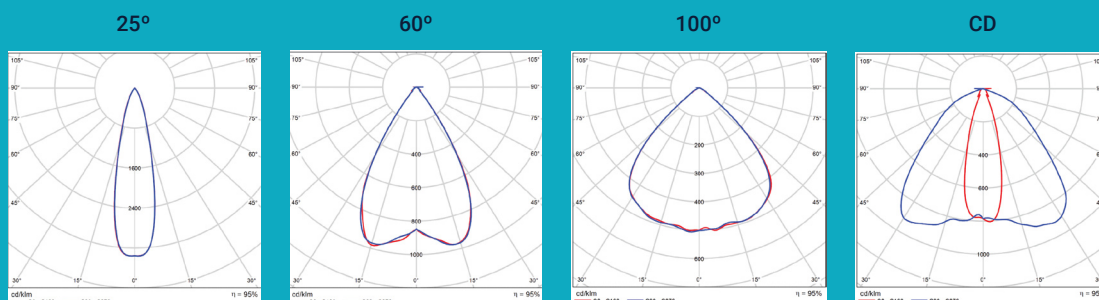
DESIGNED FOR INDOOR AND OUTDOOR ENVIRONMENTS THAT REQUIRE EFFICIENCY AND COST-EFFECTIVENESS, SUCH AS COMMERCIAL CENTERS, WAREHOUSES, AND OUTDOOR AREAS.

FEATURES

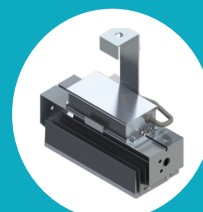


100 W
02 modules of 12 LEDs
14.868 effective lumens

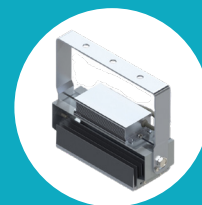
PHOTOMETRY



APPLICATIONS



Hook



Handle

QUALITY

Ensures a lifespan of up to 102,000 hours

5-year warranty

DEDICATED LENSES, LIGHT EMISSION WITHOUT WASTE

Additional and individual photometric system for each LED, ensuring the right luminance in the right place.

BEST COST-BENEFIT

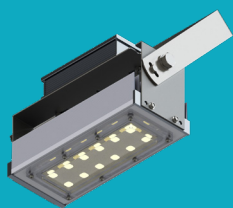
AALOK quality with the best market value.

POWER OPTIONS: 50 W, 100 W, 150 W, 200 W

SEGMENTS

Automotive sector, logistics condominiums, textile industry, commercial centers, parking lots, and others.

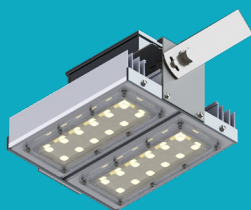
TECHNICAL SPECIFICATIONS



50 W

01 Module

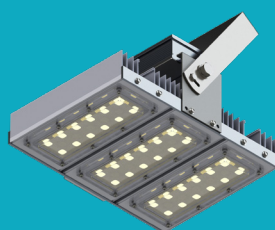
7.434 Effective lumens



100 W

02 Modules

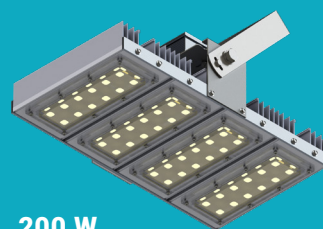
14.868 Effective lumens



150 W

03 Modules

22.302 Effective lumens



200 W

04 Modules

29.736 Effective lumens

Model / Power	50 W	100 W	150 W	200 W
Effective Power	56 W	112 W	166 W	218 W
Total Luminous Flux (lm)*	7.826	15.650	23.476	31.301
Effective Luminous Flux (lm)*	7.434	14.868	22.302	29.736
Luminous Efficiency (lm/W)*	133	133	134	136
Number of Modules	1	2	3	4
LEDs per Module	12			
Dimensions (mm)	90 x 240 x 119	180 x 240 x 119	270 x 240 x 119	360 x 240 x 119
Color Temperature (K)	5000			
CRI	>70			
Average Weight (Kg)	1,7 to 4,8			
Beam Angles	25°/ 60°/ 90° / CD			

Electrical Characteristics

Harmonic Frequency	50 to 60 Hz	
Harmonic Distortion	≤15% / 230 Vac	≤10% / 230 Vac
Operating Voltage	220 - 240 Vac	100 - 240 Vac
Power Factor (PF)	≥0.95 / 230Vac	
Operating Temperature	-20 to + 80° C	

Quality

Lifespan *	102.000 hours of continuous use
Warranty	5 years
Protection Rating	IP54 (optional IP67)
Body	Aluminum
Fasteners	Stainless Steel
Printed Circuit Board	Metal Core

Certifications

Driver	ENEC, CE, CB, RCM, SAA, CCC
LED	IESNA LM-80
Company Standard	ISO9001

* It is essential to keep the LED lens area (protective cover) unobstructed and clean regularly to prevent overheating and preserve the equipment's lifespan.

Notice: Product information and specifications are subject to change without prior notice due to technical improvements and updates.

Version: 08/2025



RUA OLAVO MACHADO 120
CINCO - CONTAGEM / MG - BRASIL



WWW.AALOK.COM.BR



CONTATO@AALOK.COM.BR



TEL: (31) 3390-2301



/AALOK.ECONOMIA



/COMPANY/AALOK